

Save unnecessary Travel and Field service costs with Net View & Control

Troubleshoot your Panel/Project Half way across the World without leaving your Desk!!

Toughpanels have an exclusive unique feature that allows you to view and control any screen on your touchpanel over the internet. Toughpanels with dedicated processor need an NVC option card whereas Toughpanels with Windows processor has this function built-in. This optional card has its own processor that allows remote monitoring and control. View and control operator screens over the internet from your PC as if you were right next to the touch panel on the factory floor. **This is also a great tool for management/quality personnel in any plant to monitor production over intranet.**

NetView & Control (NVC) option card*



NVC option card plugs into the extension connector of the Toughpanels. It has an Ethernet Port that allows a PC, anywhere in the world, to view any screen in the Panel in real-time as well as control the operation of the Panel using your mouse, also in real-time. This card can also be configured to send Emails from the Panel. As a side benefit NVC card also gives you the ability to store upto 2GB of Data in an SD card on-board. Each NVC card has a static I/P address assigned to it which is used to address the card/panel over the internet/intranet.



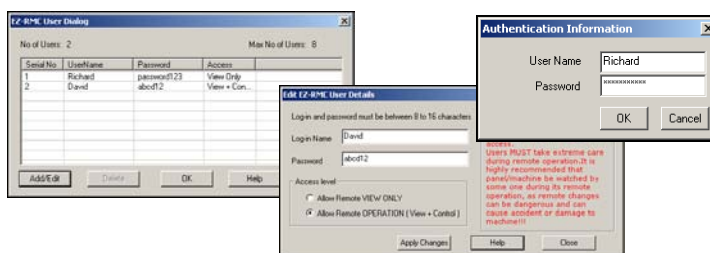
*NOTE: NVC functionality is available even without NVC card by using serial RS232 port along with optional modem or radio modem.

Built-in NetView & Control (NVC) in CE Toughpanel

Toughpanels with Windows CE Processor has a built-in Ethernet port that allows it to perform NetView and Control function without the need for the additional NVC optional card. It should however be noted that the response time of the CE Toughpanel would be slightly slower than the Toughpanel with dedicated processor and NVC option card, because the latter has a separate processor to perform the NVC function.

High Level of Password Security

For Obvious reasons NVC feature has multiple levels of password protection.

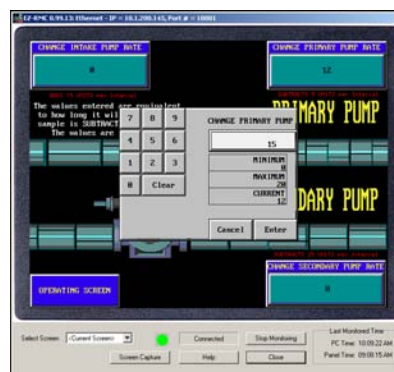


Monitor Machine/Process operation through the Panel



With UT-NVC software installed in your PC you could monitor any screen on the Touchpanel addressed by the software in Real-Time allowing system troubleshooting and/or management review of the machine operation.

Control Machine/Process operation through the Panel



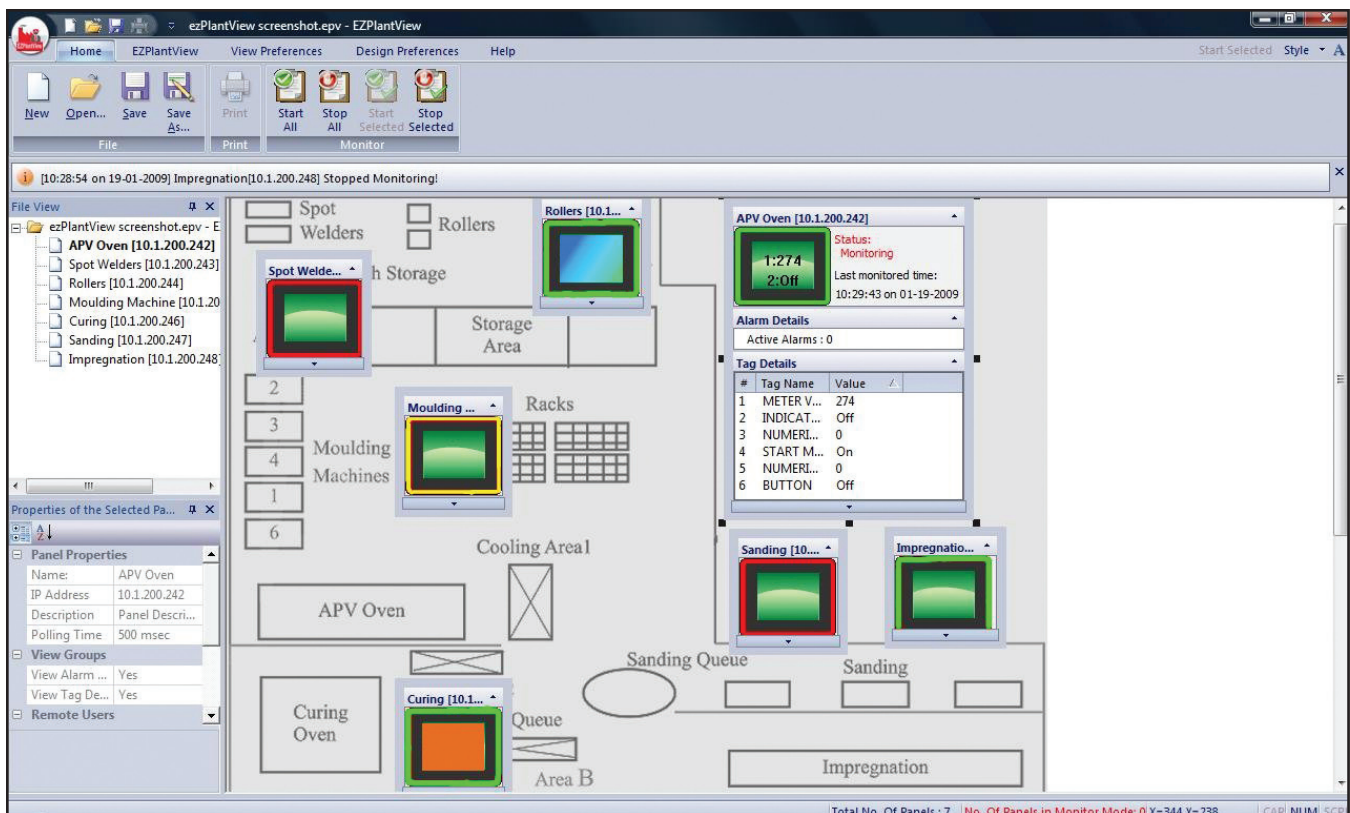
Under multiple password security UT-NVC software allows you to operate the Touchpanel just as if you are standing right next to it. Clicking on a mouse or entering a preset thru your PC in Chicago will perform the same actions as if an operator was doing the same on the touchscreen half way across the world.



Software to Monitor entire Plant Remotely

AVG Automation is proud to introduce UtiPlantView, a new software tool that gives you a bird's eye view of your plant, right from the comfort of your desk. UtiPlantView can be installed on any Windows based PC in combination with any Uticor Touchpanel equipped with the UTNVC card.

UtiPlantView allows you to monitor a limitless amount of panels simply by identifying their IP addresses. It then shows the status of those panels with user defined colors and conditions. To get a closer look, drill down even further and UtiPlantView will automatically display the actual screen using the UTNVC NetView software (included in UtiPlantView). This software allows you to monitor or take control of the touch panel without even standing up. Walking miles around the plant is now a thing of the past and finding a new form of exercise will be on your mind instead!



Uticor Power or Tough IPC is an ideal platform not only to run Uticor's soft HMI application (UtiSoft), it is also the perfect plant floor computer to monitor and control the entire plant floor that has Uticor's Toughpanels or Tough TouchPLCs.

You can specify and purchase Uticor's Power or Tough IPCs preloaded than any Uticor's software.

American Automation Products
Made *for* India



www.avg-india.com

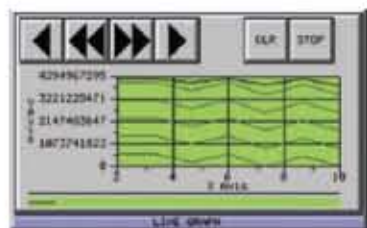
UTICOR

Tough Series ... keep on ticking

UtiPlantView - Software to Monitor entire Plant

UtiSoft™

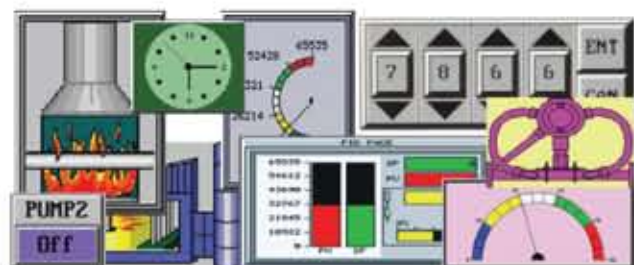
Soft HMI Ideal for Tough IPC: Runs on any 10" to 21" Display



Trend Graph / Data Acquisition / Scripting

Track up to 6 variables in one trend graph. Acquire and store data. Perform statistical process control. Scripting allows Logical and Mathematical Operations on PLC data.

**60°C, 90% Humidity
4 yr Warranty**

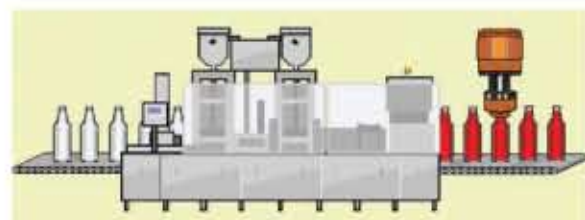


Operator Friendly
Toughpanels have the best looking pre-built as well as multi-state bitmap objects.

**Unique
On-Line Edit**

Real Time Animation

Give machine operators a better understanding of the machine process by animating the machine's motion or process on the screen



Free 4000 Symbol Library

Built in library of 4,000 objects available for you to copy and paste directly to a project screen and use them in any arrangement or position them just the way you like.



**Available
as separate
Software or
integrated
IPC/HMI
Package**

Eziest to Develop and Run on Windows XP or Windows NT in One Package!

UtiSoft is more than just a Soft HMI, it is almost like SCADA. We made an easy to use, simple operator interface that will save you a lot of engineering hours and design time due to its simplicity and ease of use. You don't need prior programming knowledge to design a screen. You do not need to attend any classes to learn how to program UtiSoft
It is Intuitive, it is Simple!

Dazzling 3D Graphics

**Program this
Screen in less
than 10 minutes
Simple as 1-2-3**



1 Using the Objects pull-down menu or an icon in the toolbar, select the object you want to create.

2 Every object has an associated dialog box. The different tabs at the top contain all the prompts for creating the object for your specific needs.

3 Once you are done creating your object, simply click OK and then click on the screen. Resize and move your object as needed. If you feel an edit is necessary, no problem! Double click the object and the dialog box will reappear. It's that EZ!!

Unlike other SCADA packages where you have to pay for the software by number of tags and you have to purchase a separate development software package, this simple to learn and use software is ready to go within hours of start. More than 30,000 engineers in North America have universally acknowledged the AVG Software to be the easiest to develop and implement.

Blazing Fast Response to Touch input

Response time of 0.75 sec to touch inputs even for complex screens. Operators have almost immediate response for a more satisfying and efficient experience

**Most PLC and Network Protocols such as Rockwell,
Siemens, Mitsubishi, Omron & Schneider Supported**
Ethernet IP, Modbus TCP/IP, Dual Driver Capability

Advanced Alarming

Advanced Alarm System comprises:

- Alarm Database
- Alarm Preview
- Alarm History
- Alarm Count
- Alarm Protection
- Send Alarm to Marquee and lot more.

