

Tough Panel™

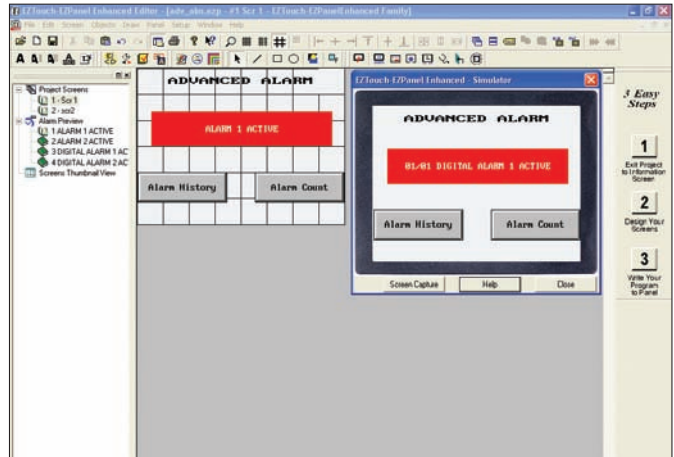
Unique Features

Advanced Alarm Management

Alarm data can be set up in alarm reports. If an alarm occurs, an active alarm appears on the screen and the alarm report can be selected to appear on the screen when the Alarm History button is pressed. The operator or maintenance department can view the alarm history, alarm count, and specific details of the alarm. The Alarm detail shows the cause of the Alarm, tag value, hi-low limits and when it was cleared.

Alarms tables do not need to take up operating screen real estate if alarms are not active.

The alarms can be triggered from any PLC tag value, either discrete On/Off or set points of variable data. The alarm database can be imported from Excel and exported to Excel. Multiple alarm banners can be displayed on the same page.



Free Sizing and Location of Alarm Banner

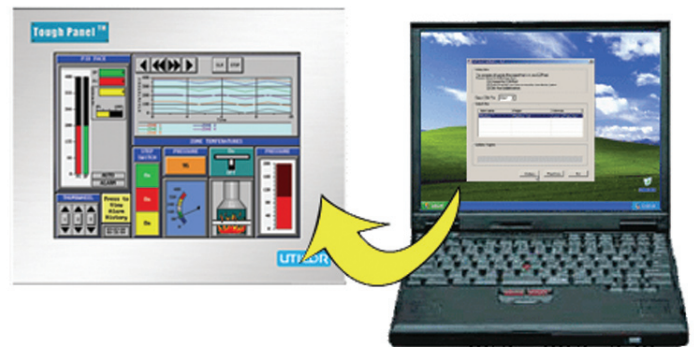
Project Update Utility

This simple utility allows OEM's (machine builders, conveyor manufacturers, etc.) and system integrators to make changes to the touch panel program and make these modifications available to the end user without the requirement for the end user to possess the programming software, or to be at all familiar with it.

The OEM sends the new program by email (as a zip file with simple and automatic unpacking) or makes it available on their website for downloading. The end user needs only web access and a laptop computer.

This utility can also be used to send new programs from a central engineering department to various plants.

While we also offer the capability to modify the user programs by sending a new flash memory card, many programmers find this utility a quicker and more direct method requiring less chance for errors by the end-user personnel.



Upgrade Screens/Projects via Email without Programming Software

Visibility Tags - Maximum Use of Screen

All objects have the unique ability to appear and disappear based upon discrete and variable PLC tag data. This allows objects to be hidden for maximum utilization of screen real estate.

